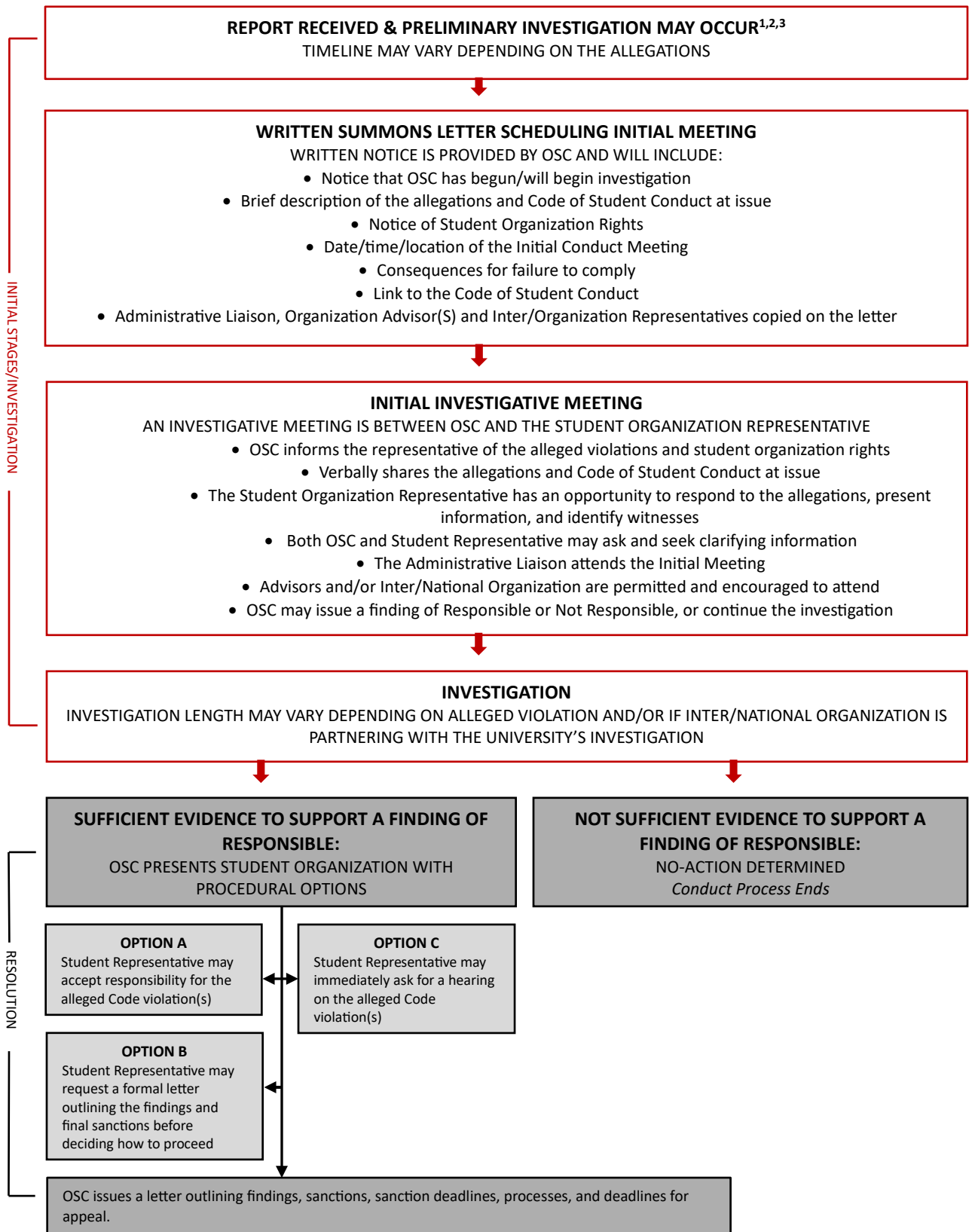


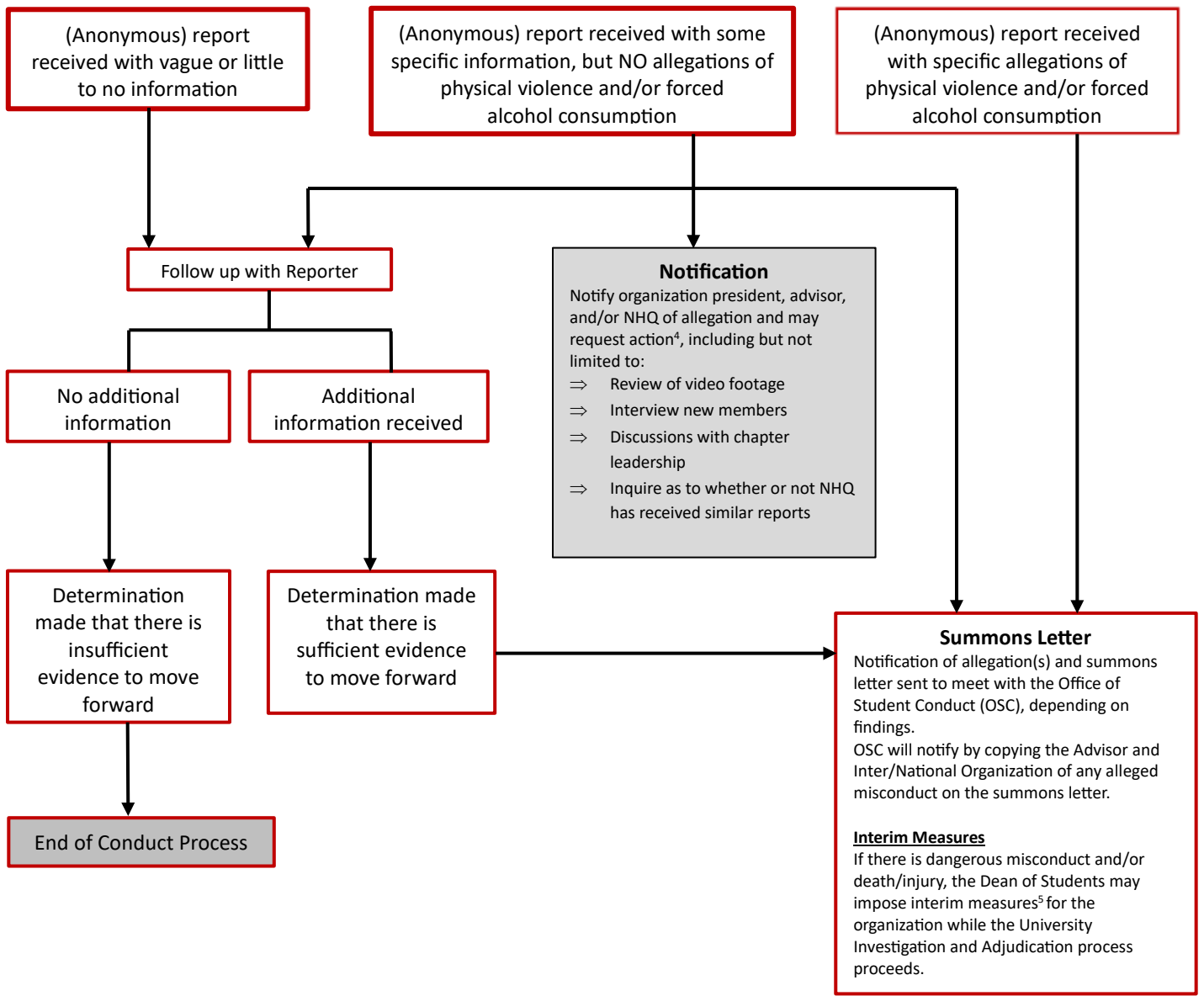
# OFFICE OF STUDENT CONDUCT

## STUDENT ORGANIZATION CONDUCT PROCESS

*These flowcharts provide a general overview of the student organization conduct process. They are not binding on the University and do not limit the discretion of University officials to respond to allegations on a case-by-case basis. These are provided only as a general reference piece. For more details, please refer to the Code of Student Conduct, which formally governs the conduct process.*



**OFFICE OF STUDENT CONDUCT**  
**STUDENT ORGANIZATION CONDUCT PROCESS PRELIMINARY INVESTIGATION PROCESS<sup>3</sup>**



<sup>1</sup>If the initial report is made to UAPD and a criminal investigation is being conducted, OSC will coordinate with law enforcement before taking action to ensure that nothing is done to jeopardize the criminal investigation.

<sup>2</sup>This approach is similar to one that UA uses for Title IX matters. In those situations, any report or concern is immediately shared with Title IX and Title IX takes over. The same is true for child protection matters where concerns about abuse or neglect are immediately reported to UAPD and the reporter has no further responsibilities unless called upon after making the report to UAPD. For example, OFSL may receive a report. That allegation would be immediately reported to OSC. Thereafter, OFSL would stand down and allow OSC to take the lead on investigating the report. It is likely that OSC will coordinate with OFSL to assist with aspects of an investigation, but, for the sake of consistency and efficiency, OSC will lead the investigation.

<sup>3</sup> See Pre-Investigation Flowchart, understanding that each situation is unique and OSC has the discretion to deviate from this approach if needed.

<sup>4</sup> OSC will conduct an immediate initial inquiry into the allegations. This may include, among other things, surveying the new members, discussions with advisors and/or officers, etc. Reasonable efforts will be made to complete this within the first 24-48 hours of receipt of the allegations and imposition of the interim measures.

<sup>5</sup> Depending on the outcome of the initial inquiry, the interim measures may be maintained, lifted, or modified (increased/decreased). If the national headquarters also imposes interim measures, the stronger/more expansive restrictions placed on the group will control. Thereafter, OSC completes its investigation into the allegations and makes a finding, which can include consideration of information from the organization and national headquarters.